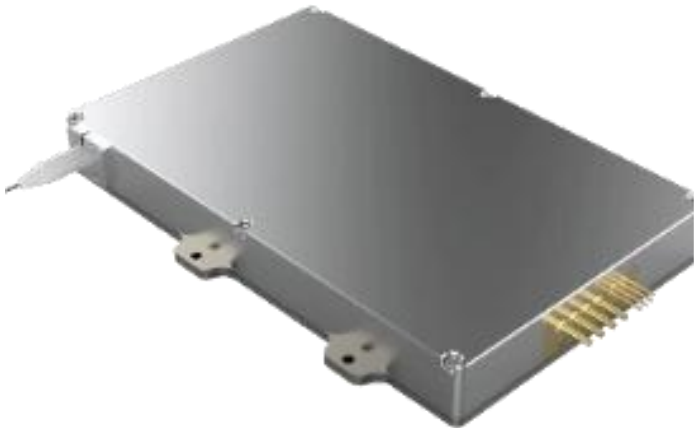


445 nm 50 W Fiber Coupled Blue Laser

K445HR7FN-50.00W



Features:

- 445 nm wavelength
- 50 W output power
- 113 μm fiber core diameter
- 0.15 NA
- BPP=8 mm. mrad

Applications:

- Material Processing
- 3D Printing
- Scientific Research

Specifications (20°C)		Symbol	Unit	K445HR7FN-50.00WN1N-11315		
				Minimum	Typical	Maximum
Optical Data ⁽¹⁾	Total CW Output Power	$P_{\text{bol}}^{(4)}$	W	50	-	-
	Number of submodules	pcs	-	-	2	-
	Submodule CW Output Power	P_o	W	-	25	-
	Center Wavelength	λ_c	nm	445±20		
	Spectral Width (FWHM)	$\Delta\lambda$	nm	-	6	-
	Wavelength Shift with Temperature	$\Delta\lambda/\Delta T$	nm/°C	-	0.1	-
	Wavelength Shift with Current	$\Delta\lambda/\Delta A$	nm/A	-	1	-
Electrical Data	Electrical-to-Optical Efficiency	PE	%	-	30	-
	Operating Current	I_{op}	A	-	2.5	3.5
	Threshold Current	I_{th}	A	-	0.35	-
	Operating Voltage (single module)	V_{op}	V	-	35	40
	Slope Efficiency (single module)	η	W/A	-	11.5	-
	Power Supply Mode	-	-	-	2 modules	-
Fiber Data	Core Diameter	D_{core}	μm	-	113	-
	Numerical Aperture	NA	-	-	0.15	-
	Minimum Bending Radius	-	mm	50	-	-
	Fiber Termination	-	-	-	SMA905	-
Thermistor	-	R_t	(K Ω)/ β (25°C)	-	10±3%/3450	-
Others	ESD	V_{esd}	V	-	-	500
	Storage Temperature ⁽²⁾	T_{st}	°C	-20	-	70
	Lead Soldering Temp	T_{ls}	°C	-	-	260
	Lead Soldering Time	t	sec	-	-	10
	Operating Temperature ⁽³⁾	T_{op}	°C	15	-	30
	Relative Humidity	RH	%	15	-	75

(1) Data measured under operation output at 50W@20°C.

(2) A non-condensing environment is required for operation and storage.

(3) Operating temperature defined by the thermistor. Acceptable operating range is 15°C~30°C, but performance may vary.

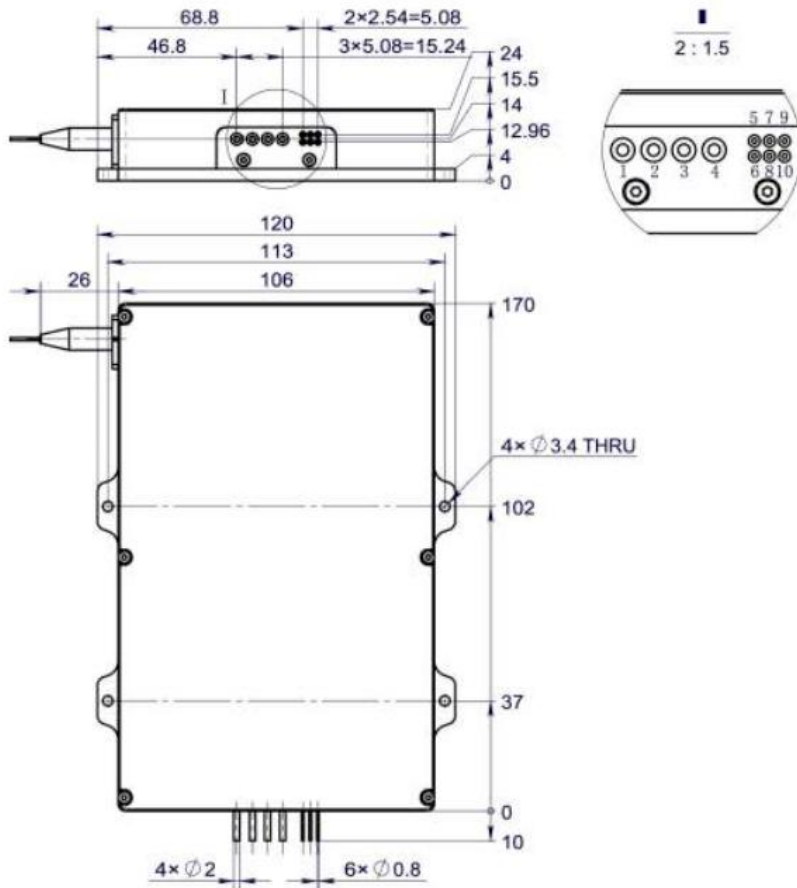
(4) Product delivery qualification standards: $I_{\text{beginning of life}} \leq 3.5\text{A}$, $P_{\text{beginning of life}} \geq 50\text{W}$;

(5) Within the warranty period, the product is considered qualified with $I_{\text{end of life}} = 3.5\text{A}$, $P_{\text{end of life}} \leq 40\text{W}$.

445 nm 50 W Fiber Coupled Blue Laser

K445HR7FN-50.00W

Package Dimensions (mm)



Pin	Function
1	LD1(+)
2	LD1(-)
3	LD2(+)
4	LD2(-)
5	Thermistor
6	Thermistor
7	*PD(P)
8	*PD(N)
9	*Aiming beam+
10	*Aiming beam-

- (1) The K445HR7FN Series blue laser consists of up to 2 submodules 25W per module. Power can be supplied separately or in series.
 (2) *: Optional functions.

OPERATING NOTES

- Avoid eye and skin exposure to direct radiation during operation.
- ESD precautions must be taken during storage, transportation and operation.
- Short-circuit is required between pins during storage and transportation.
- Please connect pins to wires by solder instead of using socket when operation current is higher than 6A. Soldering point should be close to the middle of the pins. Soldering temperature should be lower than 260°C and time shorter than 10 second.
- Make sure the fiber output end is properly cleaned before operation of laser. Follow safety protocols to avoid injury when handling and cutting the fiber.
- Use constant current power supply to avoid surge current during operation.
- Laser diode must be used according to the specifications.
- Laser diode must work with good cooling.
- Operation temperature ranges from 15°C to 35°C.
- Storage temperature ranges from -20°C to +70°C.