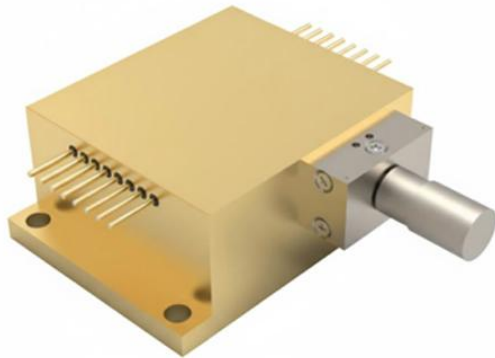


## 1064 nm 20 W Multi-Function Detachable Laser Diode

KA64HAMCA-20.00WY1Y



### Features:

- 1064 nm wavelength
- 20 W output power
- 200  $\mu\text{m}$  fiber core diameter
- 0.22 NA

### Applications:

- Medical use
- Fiber laser pumping
- Research and development

Specifications ( 25 °C )		Symbol	Unit	KA64HAMCA-20.00WY1Y		
				Minimum	Typical	Maximum
Optical Data <sup>(1)</sup>	CW Output Power	$P_O$	W	20	-	-
	Center Wavelength	$\lambda_c$	nm	1064 $\pm$ 20		
	Wavelength Shift with Temperature	$\Delta\lambda/\Delta T$	nm/°C	-	0.3	-
Electrical Data	Electrical-to-Optical Efficiency	PE	%	-	50	-
	Threshold Current	$I_{th}$	A	-	1.0	-
	Operating Current	$I_{op}$	A	-	12	15
	Operating Voltage	$V_{op}$	V	-	3.5	4
	Slope Efficiency	$\eta$	W/A	-	1.8	-
Fiber Data	Core Diameter	$D_{core}$	$\mu\text{m}$	-	200	-
	Fiber Termination	-	-	SMA905		
Thermistor	-	$R_t$	(K $\Omega$ )/(25°C)	10 $\pm$ 3%		
PD	-	$I_{mo}$	$\mu\text{A}$	100		2000
Others	ESD	$V_{esd}$	V	-	-	500
	Storage Temperature <sup>(2)</sup>	$T_{st}$	°C	-20	-	70
	Lead Soldering Temp	$T_{is}$	°C	-	-	260
	Lead Soldering Time	t	sec	-	-	10
	Operating Case Temperature <sup>(3)</sup>	$T_{op}$	°C	15	-	35
	Relative Humidity	RH	%	15	-	75
Aiming Beam	Output Power	$P_a$	mW	2	-	-
	Wavelength	$\lambda_a$	nm	635 $\pm$ 10		
	Voltage	$V_a$	V		2.3	2.6
	Current	$I_a$	mA	-	45	65

(1) Data measured under operation output at 20W@25°C.

(2) A non-condensing environment is required for operation and storage.

(3) Operating temperature defined by the package case. Acceptable operating range is 15°C~35°C, but performance may vary.

KA64HAMCA-20.00WY1Y

Pin	Function
1	FCD LED(-)
2	FCD LED(+) &PD(N)
3	FCD PD(P)
4	Aiming Beam(+) &PD(N)
5	Aiming Beam(-)
6	PD(P)
7	Thermistor
8	Thermistor

- Avoid eye and skin exposure to direct radiation during operation.
- ESD precautions must be taken during storage, transportation and operation.
- Short-circuit is required between pins during storage and transportation.
- Please connect pins to wires by solder instead of using socket when operation current is higher than 6A. Soldering point should be close to the middle of the pins. Soldering temperature should be lower than 260°C and time shorter than 10 second.
- Make sure the fiber output end is properly cleaned before operation of laser. Follow safety protocols to avoid injury when handling and cutting the fiber.
- Use constant current power supply to avoid surge current during operation.